

## **SECTION 13. LANDSCAPING AND SCREENING**

- 13.1 PURPOSE**
  - 13.2 ENFORCEMENT OF LANDSCAPE PROVISIONS**
  - 13.3 LANDSCAPE PLAN**
  - 13.4 SELECTION, INSTALLATION AND MAINTENANCE OF PLANT MATERIALS**
  - 13.5 LANDSCAPE DESIGN STANDARDS**
  - 13.6 ON-LOT LANDSCAPING**
  - 13.7 BUILDING FOUNDATION LANDSCAPING**
  - 13.8 PARKING LOT LANDSCAPING**
  - 13.9 PARKING LOT PERIMETER LANDSCAPE YARD**
  - 13.10 INTERIOR PARKING LOT LANDSCAPING**
  - 13.11 SIGN LANDSCAPING**
  - 13.12 TRANSITION YARDS**
  - 13.13 SCREENING REQUIREMENTS**
  - 13.14 ILLUSTRATION OF LANDSCAPING AND SCREENING REQUIREMENTS**
- 

### **13.1 PURPOSE**

The landscaping and screening requirements established by this Section are intended to preserve and enhance the appearance, public health, safety, convenience, comfort and general welfare of the City by fostering an aesthetically pleasing development. Proper landscaping contributes to the City in many ways: enhancing its character and scenic beauty, providing clean air, reducing noise, preventing erosion of topsoil, reducing the rate of stormwater runoff, providing nesting areas for birds and habitat for other wildlife, conserving energy, and providing shade and windbreaks. These regulations are also intended to increase the compatibility of adjacent uses, and minimize the adverse impact of noise, dust, motor vehicle headlight glare or other artificial light intrusions, and other objectionable activities or impacts conducted on, or created by, adjoining or neighboring uses.

### **13.2 ENFORCEMENT OF LANDSCAPE PROVISIONS**

No building permit or occupancy certificate shall be issued for any lot or use subject to the requirements of this Section unless all the requirements of this Section have been fulfilled. Failure to implement the landscape plan, or to maintain the lot or use in substantial conformance with the landscape plan, shall be cause for revocation of the occupancy certificate and/or the application of fines and penalties, as established in this Ordinance. In addition, all landscaping is subject to periodic inspection by the Zoning Administrator.

### **13.3 LANDSCAPE PLAN**

#### **A. Landscape Plan Required**

A detailed landscape plan shall be submitted to the City as part of any new development, and/or special use, planned development or site plan review application, and must be approved prior to the issuance of a building permit.

#### **B. Content of Landscape Plan**

1. The location and dimensions of all existing and proposed structures, property lines, easements, parking lots and drives, roadways and rights-of-way, sidewalks, ground signs, refuse disposal and recycling areas, sidewalks, bicycle paths and parking facilities, fences, electrical equipment, recreational facilities, drainage facilities, and other freestanding structures, as determined necessary by the Zoning Administrator.

2. The location, quantity, size, name and condition, both botanical and common, of all existing plant materials, including trees and other material in the right-of-way, and indicating plant material to be retained and removed.
3. The location, quantity, size and name, both botanical and common, of all proposed plant material including, but not limited to, shade and evergreen trees, shrubs, groundcover, annuals/perennials and turf.
4. The existing and proposed grading of the site indicating contours at one (1) foot intervals. Proposed berming shall be indicated using one (1) foot contour intervals.
5. Elevations of all proposed fences, steps, stairs, retaining walls both fixed (cast concrete, unitized walls) and any natural rock outcroppings on the site.
6. Elevations, cross-sections, and other details as determined necessary by the Zoning Administrator.

#### **C. Minor Changes to Approved Landscape Plans**

Minor changes to the landscape plan that do not result in a reduction in the net amount of plant material as specified on the approved landscape plan shall be approved by the Zoning Administrator. Changes to the size and species of plant materials of an approved landscape plan shall not be considered a minor change. Major changes shall be approved by the body granting approval of the landscape plan initially.

### **13.4 SELECTION, INSTALLATION AND MAINTENANCE OF PLANT MATERIALS**

#### **A. Selection**

All planting materials used shall be of good quality and meet American Association of Nurserymen (ANNS) standards for minimum acceptable form, quality and size for species selected, and capable to withstand the seasonal temperature variations of northeastern Illinois, as well as the individual site microclimates. The use of species native to northeastern Illinois shall be encouraged. Size and density of plant material, both at the time of planting and at maturity, are additional criteria that shall be considered when selecting plant material. Where appropriate, the use of drought and salt tolerant plant material is preferred.

#### **B. Installation**

All landscaping materials shall be installed in accordance with the current planting procedures established by the AANS. All plant materials shall be free of disease and shall be installed so that soil of sufficient volume, composition and nutrient balance are available to sustain healthy growth.

#### **C. Required Element**

Landscape materials depicted on landscape plans approved by the City shall be considered to be required site plan elements in the same manner as buildings, parking and other improvements. As such, the owner of record, or in some instances the homeowner's association, shall be responsible for the maintenance, repair and replacement of all landscape materials, and fences, steps, retaining walls and similar landscaping elements over the entire life of the development.

#### **D. Maintenance**

All landscaping materials shall be maintained in good condition, shall present a healthy, neat and orderly appearance, and shall be kept free of refuse and debris. Any dead, unhealthy or missing plants shall be replaced within six (6) months of notification by the City or the next reasonable available growing/planting season. Fences, steps, retaining walls and similar landscaping elements shall be maintained in good repair. The owner of the premises shall be responsible for the maintenance, repair, and replacement of all landscape materials, fences, steps, retaining walls and similar landscaping elements, and refuse disposal areas. Irrigation systems, when provided, shall be maintained in good operating condition to promote the health of the plant material and the conservation of water.

### **13.5 LANDSCAPE DESIGN STANDARDS**

Landscape plans, as described above, shall be prepared by a licensed Landscape Architect, registered in the State of Illinois, and evaluated and approved based on the following design criteria.

#### **A. Scale and Nature of Landscape Material**

The scale and nature of landscape materials shall be appropriate to the size of the site and related structures.

#### **B. Selection of Plant Material**

Recommended plant materials are listed in the approved plant materials list included in Appendix E (Recommended Plant Materials List). Plant material shall be selected for its form, texture, color, pattern of growth and suitability to local conditions.

#### **C. Shade Trees**

All deciduous shade trees shall have a minimum trunk size of three (3) inches in caliper (dbh) as measured at breast height at time of planting, unless otherwise specified.

#### **D. Evergreen Trees**

Evergreens trees shall have a minimum height of six (6) feet at planting and shall be incorporated into the landscape treatment of a site, particularly in those areas where year-round screening and buffering is required.

#### **E. Ornamental Trees**

Single stem ornamental trees shall have a minimum trunk size of three (3) inches in caliper at planting, unless otherwise specified. Multiple stem ornamental trees shall have a minimum height of eight (8) feet at planting, unless otherwise specified.

#### **F. Shrubs**

Unless otherwise specified, all large deciduous and evergreen shrubs shall have minimum height of three (3) feet at installation, and all small deciduous and evergreen shrubs shall have a minimum height of eighteen (18) inches at installation.

Large shrubs shall be considered to be those shrubs that reach five (5) or more feet in height at maturity. Small shrubs shall be considered to be those shrubs that can grow up to five (5) feet in height if left unmaintained, but are generally kept at heights of eighteen (18) to thirty (30) inches.

#### **G. Softening of Walls and Fences**

Plant material shall be placed intermittently against long expanses of building walls, fences and other barriers to create a softening effect and to help break up long expanses of blank walls with little architectural detail.

#### **H. Planting Beds**

Planting beds shall be mulched with shredded hardwood, mushroom compost or decomposed rock chips less than one-quarter (1/4) inch in diameter, feather rocks or similar materials. Lava rock, large river rock or colored stones are not acceptable.

#### **I. Irrigation**

Landscape design pursuant to the requirements of this Section shall recognize the need for irrigation and water conservation. Sprinkler irrigation systems may be required for certain landscaped areas, as determined by a landscape architect. The need for sprinkler irrigation systems shall be determined by the type of plant material and the condition/growing medium that they are installed in. For instance, whether there is a permanent means available to water plant material, such as hose bibs, shall be a consideration. All irrigation systems shall be designed to minimize the use of water.

#### **J. Energy Conservation**

Plant material placement should be designed to reduce the energy consumption needs of the development. In addition, landscaping designs shall take into account and make an effort to implement LEED policy and design standards, where appropriate.

1. Deciduous trees should be placed on the south and west sides of buildings to provide shade from the summer sun.
2. Evergreens and other plant materials should be concentrated on the north and west sides of buildings to dissipate the effect of winter winds.

#### **K. Preservation of Existing Trees**

The preservation and protection of existing trees shall be as required in Article 15, Chapter 18 of the City's Municipal Code.

#### **L. Berming**

Earthen berms and existing topographic features shall be incorporated into the landscape treatment of a site where there is sufficient space and, in particular, when berms and existing topographic features can be combined with plant material to facilitate effective screening. Minimum unretained berm side slopes shall be maintained at no less than a 4:1 slope ratio to prevent erosion and be properly and safely maintained. Retained slopes may be implemented with the appropriate terracing necessary to reduce the need for safety railing.

### **13.6 ON-LOT LANDSCAPING**

#### **A. Turf Required**

All yards within the City shall be landscaped primarily with seed or sod.

#### **B. Required Trees**

Shade trees shall be provided on all zoning lots at a minimum of:

1. Two (2) shade trees per townhouse or multi-family residential lot.
2. Four (4) shade trees per non-residential lot.

Existing trees shall be counted toward this required minimum number.

### **13.7 BUILDING FOUNDATION LANDSCAPING** (Ordinance 2008-65, 9/2/2008)

**A.** Building foundation landscaping is required in all districts for all new construction and additions to buildings that are visible from a street, including all front and corner side yards.

**B.** A multi-family residential or non-residential development within the commercial or special purpose districts that has a front and/or corner side yard may request relief during the site plan review process before the Planning and Zoning Commission. The Planning and Zoning Commission may decide that such landscaping is not appropriate for the development and may waive this requirement.

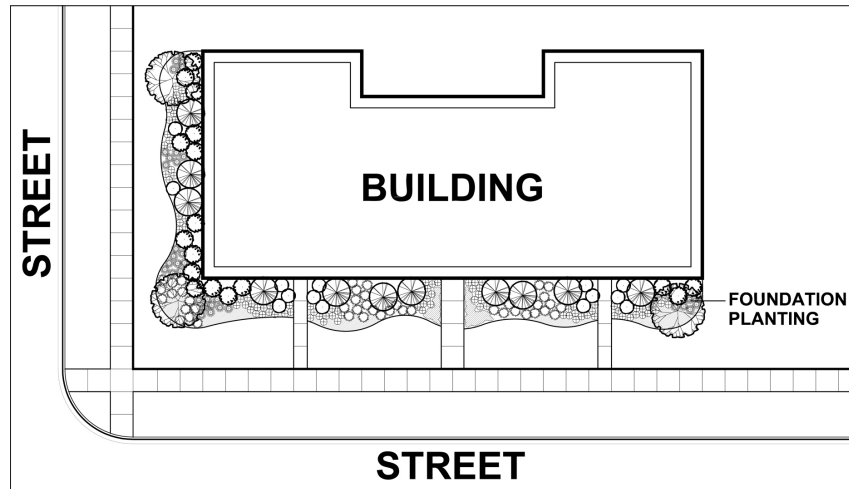
**C.** Foundation plantings shall work in concert with transition yard plantings to frame important views, while visually softening long expanses of walls, particularly those that lack windows and/or other architectural details. Foundation plantings shall be compatible with the materials and the form of a building. The body granting approval of the landscape plan shall determine compliance with this intent as part of the review.

**D.** The minimum width of the area provided to accommodate foundation plantings is as follows:  
(Ordinance 2009-50, 7/6/2009)

1. Five (5) feet of planting area width adjacent to building walls having an eave height of up to twenty (20) feet.
2. Ten (10) feet of planting area width adjacent to building walls having an eave height of twenty (20) feet or more.

**E.** Foundation plantings shall be planted in accordance with the requirements below:

Foundation plantings shall be installed across the entire length of street facing facades, except where walkways and driveways are located. (See [Figure 16: Foundation Planting](#))



**FIGURE 16: FOUNDATION PLANTING**

### **13.8 PARKING LOT LANDSCAPING**

#### **A. Parking Lot Landscaping Design Guidelines**

All parking lots of ten (10) or more spaces are subject to site plan review and a landscape plan as a condition of obtaining a building permit. Perimeter landscaping is required for all parking lots and shall be established along the edge of the parking lot. Interior parking lot landscaping is required for those lots of ten (10) or more spaces. Nothing in this section shall be deemed to prevent the applicant's voluntary installation of additional interior parking lot landscaping, so long as parking space requirements and parking lot design requirements are complied with.

#### **B. Existing Parking Lots**

For existing parking lots that currently do not comply with the required parking lot landscaping, such landscaping shall be provided when:

1. A new principal building or building addition is constructed, or exterior remodeling of the principal building occurs.
2. Over fifty percent (50%) of the total area of an existing parking lot is reconstructed.
3. When an existing parking lot under ten thousand (10,000) square feet in area is expanded by fifty percent (50%) or more in total surface area.
4. When an existing parking lot over ten thousand (10,000) square feet in area is expanded by twenty-five percent (25%) or more in total surface area.

The Planning and Zoning Commission may modify the amount of landscaping required by this Section or exempt existing parking lots from providing landscaping if such landscaping would reduce the amount of parking spaces and create a nonconformity.

## **13.9 PARKING LOT PERIMETER LANDSCAPE YARD**

Perimeter parking lot landscaping provides for the enhancement and screening of parking lots by requiring a scheme of pedestrian walls and/or landscaping along public streets. Perimeter landscaping shall be required for all parking lots and shall be established along the edge of the parking lot. See Section 13.14 (Illustration of Landscaping and Screening Requirements) for a graphic illustration of such landscaping.

### **A. Applicability**

The landscape treatment shall run the full length of the parking lot and shall be located between the property line and the edge of the parking lot. All perimeter parking lot screening areas shall be protected with raised concrete curbs.

### **B. Width of Perimeter Landscape Yard**

A perimeter landscape yard shall be a minimum of four (4) feet in width and shall require six (6) inch curbing. This shall exclude any bumper overhang.

### **C. Required Landscaping**

The following landscaping shall be provided within the perimeter landscape yard.

#### **1. Amount of Landscaping**

A landscape treatment shall run the full length of the perimeter landscape yard.

#### **2. Trees**

One (1) tree shall be planted every forty (40) linear feet of yard length. As part of the landscape plan approval, trees may be clustered based on specific site requirements or design scheme but the total number of trees planted shall be no less than the amount required by a linear planting spaced forty (40) feet apart.

#### **3. Shrubs**

For every three (3) feet of perimeter yard length, one (1) shrub, measuring a minimum of two (2) feet at planting and reaching a minimum of three (3) feet in height at maturity. As part of the landscape plan approval, shrubs may be spaced at various intervals based on specific site requirements or design scheme, but the total number of shrubs planted shall be no less than the amount required by a linear planting spaced three (3) feet apart.

#### **4. Fences and Walls**

- a.** In addition to the landscaping requirements, a fence or wall of no less than four (4) feet, nor more than five (5) feet, in height shall be provided along the perimeter landscape yard. Said fence shall be located:
  - i.** Between the planting strip and the front and corner side lot line.
  - ii.** Outside the planting strip, but inside the property line along the interior side and rear lot lines.
- b.** Fences or walls may be constructed with the following materials, and shall receive the same architectural treatment on both sides:

**i. Fences**

- (a) Treated wood, cedar or redwood
- (b) Simulated wood
- (c) Wrought-iron or aluminum designed to simulate wrought-iron

**ii. Walls**

- (a) Textured, panelized or patterned concrete
- (b) Brick
- (c) Tile
- (d) Architectural block or stone

Materials other than those listed below shall be subject to approval by the Planning and Zoning Commission.

- c. Where feasible, plant materials shall be installed between the sidewalk and the fence or wall to provide a softening effect on the fence or wall.
- d. As an alternative to Paragraphs a through c above, shrubs may be combined with a berm accentuated with additional landscape plantings and turf, instead of a low wall or fence, so long as effective screening is provided to a height of four (4) feet.

**5. Groundcover**

Landscaped areas outside of shrub and tree masses shall be planted in turf or other live groundcover, perennial or ornamental grass plantings.

**13.10 INTERIOR PARKING LOT LANDSCAPING**

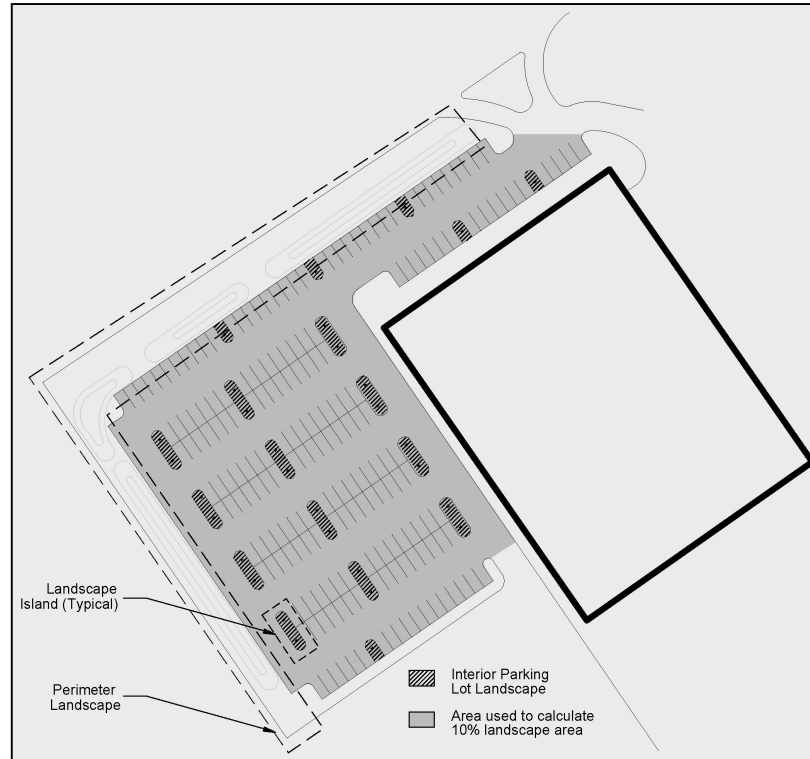
For parking lots consisting of ten (10) or more spaces, interior parking lot landscaping shall be required. Ten percent (10%) of the total parking lot area shall be landscaped with parking lot islands and landscaped areas. (See [Figure 17: Interior Parking Lot Landscaping](#)) Parking lot perimeter landscape yards shall not be included toward satisfying this requirement. See Section 13.14 (Illustration of Landscaping and Screening Requirements) for a graphic illustration of such landscaping.

**A. Amount**

Parking lot islands and landscaped areas shall be provided in the following amount:

1. One (1) parking lot island shall be provided between every ten (10) to fifteen (15) contiguous parking spaces. As part of the landscape plan approval, parking lot island locations may be varied based on specific site requirements or design scheme, but the total number of islands shall be no less than the amount required one (1) island for every ten (10) spaces. However, all rows of parking spaces shall be terminated by a parking lot island.

**FIGURE 17: INTERIOR PARKING LOT LANDSCAPING**



2. At least one (1) shade tree shall be provided for every one-thousand five-hundred (1,500) square feet of off-street parking lot area, up to six-thousand (6,000) square feet, and at least one (1) tree shall be provided for every three thousand (3,000) square feet of pavement area above six-thousand (6,000) square feet. Such trees shall be planted within parking lot islands and landscaped areas.
3. No off-street parking facility of greater than ten thousand (10,000) contiguous square feet of pavement area shall be permitted. Off-street parking facilities larger than ten thousand (10,000) square feet shall be appropriately broken by linear planting strips or variable shaped islands in the interior of the parking facility. Such planting strips or islands shall be satisfactorily landscaped with trees and suitable groundcover, and shall constitute no less than five (5%) percent of the total area of the off-street parking facility excluding the perimeter landscape yard.

**B. Size of Parking Lot Islands**

Where parking lot islands are required, they shall be the same dimension as the parking stall. Double rows of parking shall provide parking lot islands that are the same dimension as the double row.

**C. Design of Planting Areas**

Parking lot islands and landscaped areas shall be at least six (6) inches above the surface of the parking lot and protected with concrete curbing, except where designed specifically for the absorption of stormwater. Such islands and landscaped areas shall be properly drained and irrigated as appropriate to the site conditions to ensure survivability.

**D. Type of Landscape Material**

Shade trees shall be the primary plant materials used in parking lot islands and landscaped areas. Ornamental trees, shrubs, hedges and other plant materials may be used to supplement the shade tree plantings but shall not create visibility concerns for automobiles and pedestrians.

**E. Quantity of Landscape Material Within Parking Lot Islands and Landscaped Areas**

A minimum of one (1) shade tree shall be provided for every parking lot island. If the island extends the width of a double row, then two (2) shade trees shall be provided. Landscaped areas within the parking lot shall provide a minimum of one (1) shade tree for every three hundred (300) square feet of landscaped area.

**F. Groundcover**

A minimum of seventy-five percent (75%) of every parking lot island or landscaped area shall be planted in turf or other live groundcover, perennials or ornamental grasses. Where extreme conditions exist that will not make this feasible or practical, the body approving the landscape plan may permit decomposed (rotten) granite groundcover so long as it is properly graded, will not erode due to slope conditions and is properly maintained.

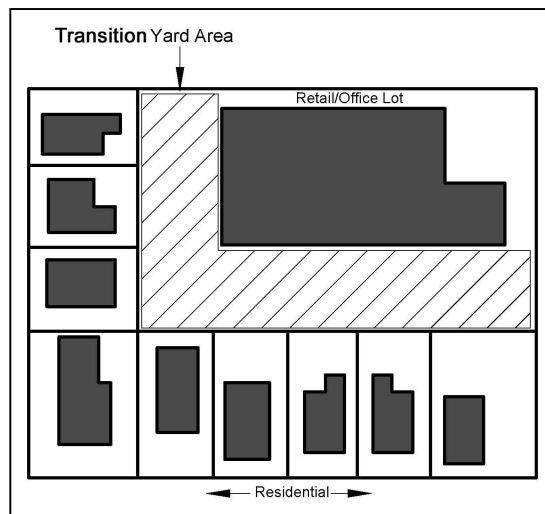
**13.11 SIGN LANDSCAPING**

Ground signs shall be landscaped at the base of the sign in accordance with Section 14.5.D (Landscape Requirements).

**13.12 TRANSITION YARDS**

A. This section establishes standards for the dimensions and improvement requirements of transition yards between land uses and/or zoning districts within the rear or interior side yard. (See Figure 18: Transition Yard Locations) Nothing in this Section shall be deemed to prevent the applicant's voluntary installation of transition yards to these design specifications. See Section 13.14 (Illustration of Landscaping and Screening Requirements) for a graphic illustration of such landscaping.

**FIGURE 18: TRANSITION YARD LOCATIONS**



- B.** In some instances, a transition yard may not be required by the Planning and Zoning Commission. These include, but are not limited to, instances where the rear wall of a commercial building is located on the rear property line or where an alley is located between a commercial property that abuts a residential property. Where it proves difficult to meet the transition yard requirements of this Ordinance, which may include other situations than those listed here, the body approving the landscape plan may approve alternative approaches or waive requirements.
- C.** Transition yards are required in the following situations:
1. Where an R-4 or R-5 District abuts an R-1, R-2 or R-3 District. (Ordinance 2009-50, 7/6/2009)
  2. Where a commercial district abuts a residential district.
  3. Where a non-residential use is located within a residential district.
- D.** Transition yards shall be provided in interior side yards and rear yards. Transition yards may be located within required yards, and shall be reserved for the planting of material and installation of screening as required by this section. No parking, driveways, sidewalks, accessory buildings or other impervious surfaces shall be permitted within the transition yard area, unless otherwise specified by this Ordinance.
- E.** All plantings in the transition yard shall be in accordance with the design standards of this Section. The minimum size and improvement of transition yards shall be as follows:

**1. Interior Side Yard Transition Yards**

When required, the transition yard within the interior side yard shall be a minimum of ten (10) feet in width. Within this required transition yard, the following improvements shall be provided:

- a. Shade trees shall be planted on an average of one (1) tree for every thirty (30) linear feet of yard length. The trees may be grouped or staggered to maximize their effect, subject to approval by the Planning and Zoning Commission.
- b. An opaque masonry wall (stone, stucco or brick) or solid wood decorative fence, with the finished side of the fence facing the adjacent residential property, or dense evergreen hedge, six (6) feet in height shall be erected along one hundred percent (100%) of the yard length.
- c. Shrubs shall be planted on an average of one (1) shrub for every three (3) feet of yard length.
- d. Areas not planted with trees or shrubs shall be maintained as turf or other groundcover.

**2. Rear Yard Transition Yard**

When required, the transition yard within the rear yard shall be a minimum of ten (10) feet in width. Within this required transition yard, the following improvements shall be provided:

- a. A mix of shade trees and evergreen trees planted on an average of one (1) tree for every twenty (20) linear feet of the yard length. The trees may be grouped or staggered to maximize their effect, subject to approval of the landscape plan.

- b. Shrubs shall be planted on an average of one (1) shrub for every three (3) feet of yard length.
- c. A masonry wall (stone, stucco or brick) or solid wood decorative fence, with the finished side of the fence facing the adjacent residential property, or dense evergreen hedge, six (6) feet in height shall be erected along one hundred percent (100%) of the yard length.
- d. Areas not planted with trees or shrubs shall be maintained as turf or other groundcover.

### **13.13 SCREENING REQUIREMENTS**

#### **A. Refuse Disposal Dumpsters and Refuse Storage Areas**

Refuse disposal containers, recycling containers, and refuse and recycling storage areas shall be screened on three (3) sides by a solid wood fence or masonry screen wall to a height of no less than six (6) feet but no more than eight (8) feet. Where required, the dumpster enclosure shall be gated, and situated on a concrete apron that extends a minimum of six (6) feet beyond the opening of the enclosure, so as to support the weight of the waste disposal vehicle during unloading. All refuse shall be stored within the covered refuse disposal containers. In residential districts, this provision shall not apply where refuse is collected by the City from containers less than one-hundred (100) gallons in size at the street, curb or alley.

#### **B. Loading Berths**

Where feasible, loading berths in all zoning districts shall be located and oriented so as not be visible from the street and adjacent properties, while still allowing access to the use it is serving. In addition, loading berths in all zoning districts shall be screened as much as possible, unless such screening is determined unnecessary by the body approving the landscape plan. Such screening shall consist of a solid wood or simulated wood fence or masonry screen wall to a height of no less than six (6) feet. A dense evergreen hedge may be substituted for a fence or wall, subject to approval of the landscape plan.

#### **C. Outdoor Storage and Display Areas**

##### **1. Outdoor Storage Areas**

All outdoor storage areas shall be completely screened by a solid wood or simulated wood fence or masonry screen wall to a height of no less than six (6) feet but no more than eight (8) feet. Where feasible, plant materials shall be installed along the fence or wall located along the public right-of-way to provide a softening effect. No materials stored outdoors shall be of a greater height than that of the required fence or wall.

##### **2. Outdoor Display Areas**

- a. When the rear or interior side yard of an outdoor display area abuts a residential district, or the rear yard is separated from a residential district by an alley, the outdoor display area shall be effectively screened from view by a solid wood fence, masonry screen wall, or dense hedge at least six (6) feet in height. Chain-link fencing is prohibited.

- b. All outdoor display areas shall be designed with a landscaped yard along the public right-of-way, excluding alleys, a minimum of five (5) feet in width and planted with shade or evergreen trees at a rate of one (1) tree per twenty-five (25) feet, and supplemented with shrubs and perennials to enhance the view from the public right-of-way. These screening requirements are not intended to prohibit openings reasonably necessary for access drives and walkways.
- c. Motor vehicle dealerships or rental establishments with outdoor sales and display lots shall be designed with permanent screening along the right-of-way meeting the requirements of Paragraph b above, but such plantings may be clustered. However, the screening may consist of small shrubs and/or a low pedestrian wall, rather than shade or evergreen trees, to optimize the view of motor vehicles for sale.
- d. Growing areas for nursery stock located in the front or corner side yard shall be considered to meet screening requirements.

#### **D. Drive-Through Facility**

Drive aisles of drive-through facilities shall be effectively screened from view along the public right-of-way and at the edges of sites adjacent to residential properties in order to minimize the impact of exterior site lighting, headlight glare and any menu intercom displays. Such screening shall be approved during the site plan review process and shall consist of a solid wood or simulated wood fence, masonry screen wall, or dense evergreen hedge at least six (6) feet in height. Chain-link fencing is prohibited. Plant materials shall be installed along the fence or wall to provide a softening effect.

### **13.14 ILLUSTRATION OF LANDSCAPING AND SCREENING REQUIREMENTS**

Figure 19: Landscaping and Screening Requirements provides a sample illustration of the landscaping and screening requirements of this Section of the Ordinance.

**FIGURE 19: LANDSCAPING AND SCREENING REQUIREMENTS**

