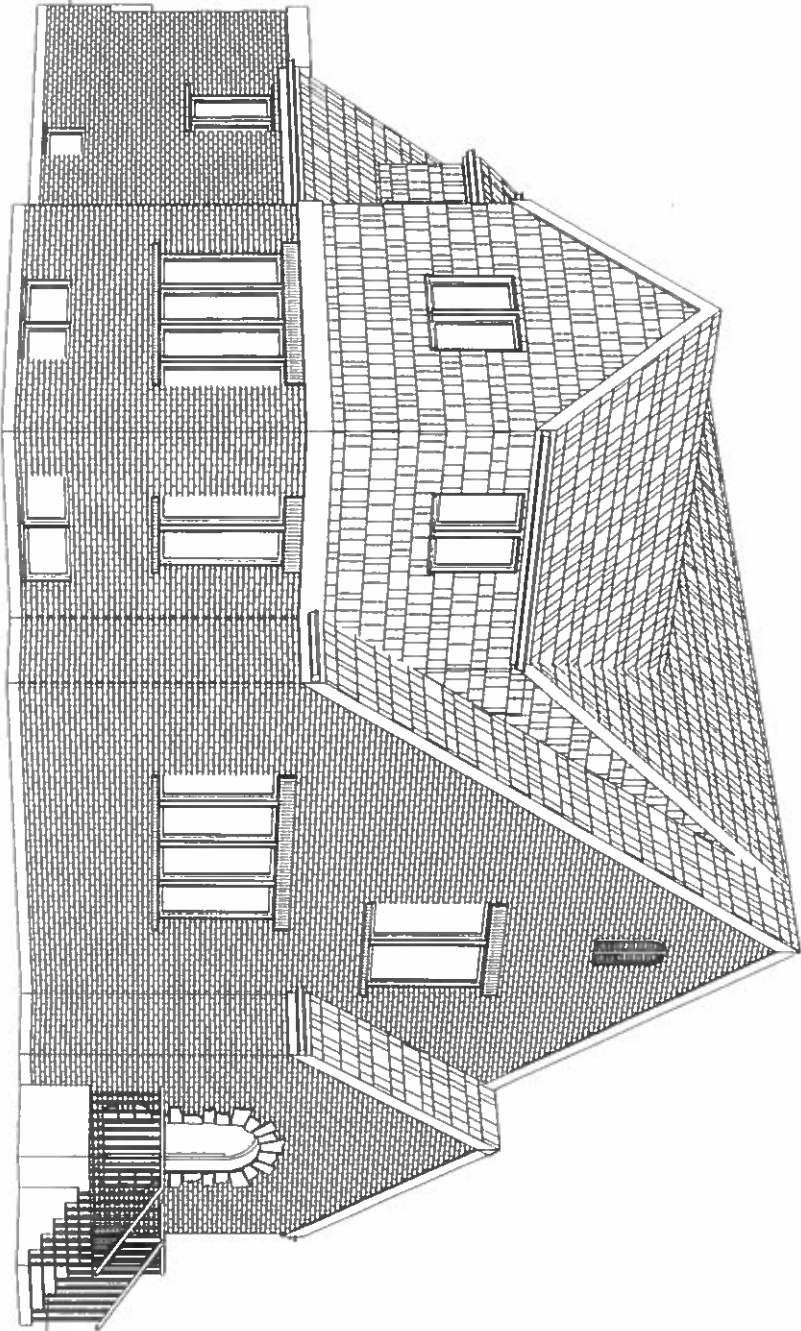


PERSEPECTIVE VIEW LOOKING NORTHWEST



6.7.17

DAVID SCHMITT
ARCHITECT

8441 KARLOV AVENUE SKOKIE IL 60076
DAVIDSCHMITTARCHITECT@GMAIL.COM
TELEPHONE 224.578.2078

AN ADDITION TO AND RENOVATION OF
THE SCHERMERHORN RESIDENCE
500 SOUTH CHESTER AVE • PARK RIDGE, IL

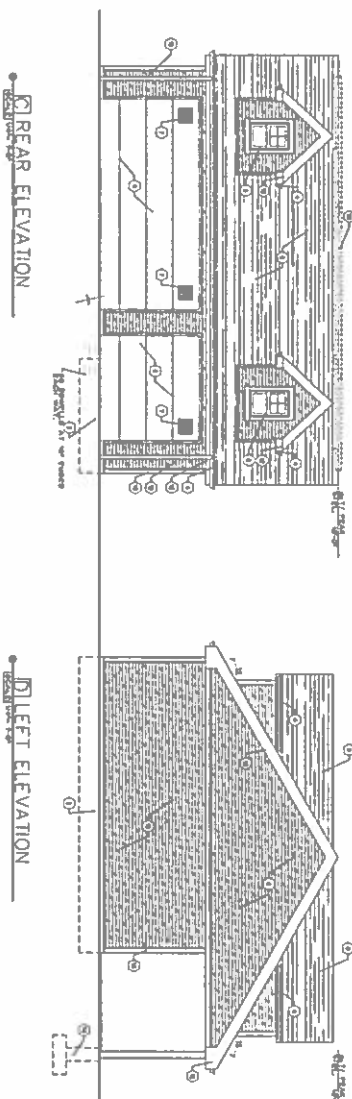
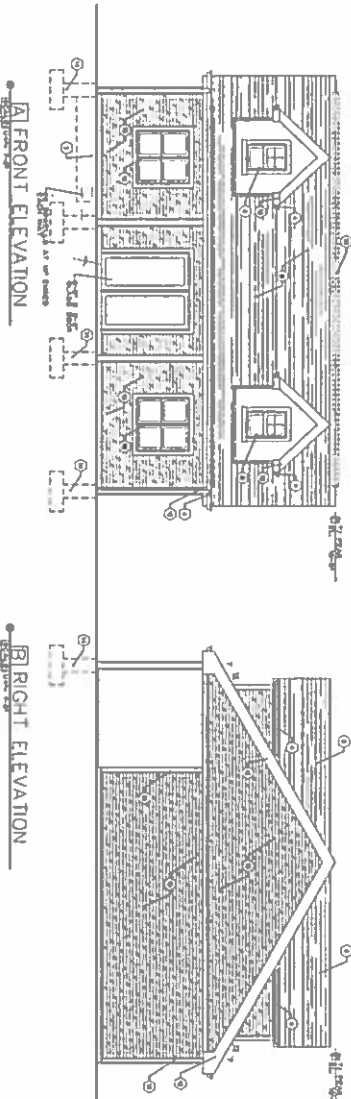


FRONT ELEVATION

615 S. VINE ST.

TAGGED NOTES

MARK	DESCRIPTION OR ITEM	DATE
1	REMOVE EXISTING WALL OF PAUL BOND	1/15/2019
2	FOUNDATION EXIST. 3 INCHES TO SILL, SEE WALL SECTION 3	
3	FOUNDATION EXIST. 3 INCHES TO SILL, SEE WALL SECTION 3	
4	FOUNDATION EXIST. 3 INCHES TO SILL, SEE WALL SECTION 3	
5	FOUNDATION EXIST. 3 INCHES TO SILL, SEE WALL SECTION 3	
6	FOUNDATION EXIST. 3 INCHES TO SILL, SEE WALL SECTION 3	
7	FOUNDATION EXIST. 3 INCHES TO SILL, SEE WALL SECTION 3	
8	FOUNDATION EXIST. 3 INCHES TO SILL, SEE WALL SECTION 3	
9	FOUNDATION EXIST. 3 INCHES TO SILL, SEE WALL SECTION 3	
10	FOUNDATION EXIST. 3 INCHES TO SILL, SEE WALL SECTION 3	
11	FOUNDATION EXIST. 3 INCHES TO SILL, SEE WALL SECTION 3	
12	FOUNDATION EXIST. 3 INCHES TO SILL, SEE WALL SECTION 3	
13	FOUNDATION EXIST. 3 INCHES TO SILL, SEE WALL SECTION 3	
14	FOUNDATION EXIST. 3 INCHES TO SILL, SEE WALL SECTION 3	
15	FOUNDATION EXIST. 3 INCHES TO SILL, SEE WALL SECTION 3	
16	FOUNDATION EXIST. 3 INCHES TO SILL, SEE WALL SECTION 3	
17	FOUNDATION EXIST. 3 INCHES TO SILL, SEE WALL SECTION 3	
18	FOUNDATION EXIST. 3 INCHES TO SILL, SEE WALL SECTION 3	
19	FOUNDATION EXIST. 3 INCHES TO SILL, SEE WALL SECTION 3	
20	FOUNDATION EXIST. 3 INCHES TO SILL, SEE WALL SECTION 3	

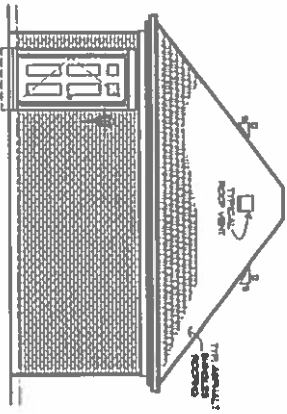


ARCHITECT
DATE
PROJECT NAME
SCALE

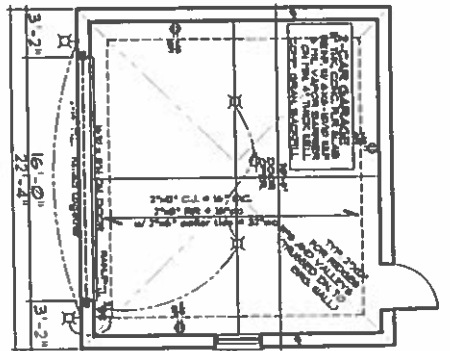
MIC & Associates, LLC
 1875 W. BROADWAY
 SUITE 100
 DENVER, CO 80202

114 CHESTER AVENUE
 DENVER, CO 80202

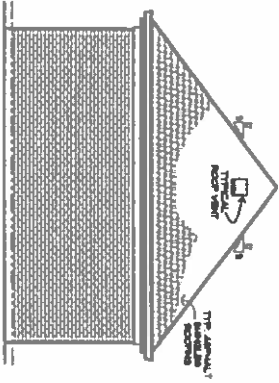
PROJECT #
DATE
SCALE
1/15/2019



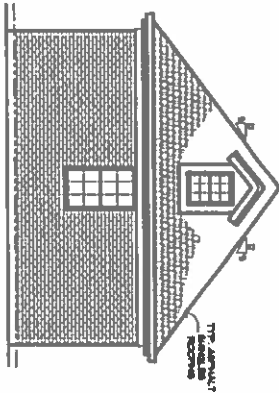
WEST ELEVATION
SCALE: 1/8" = 1'-0"



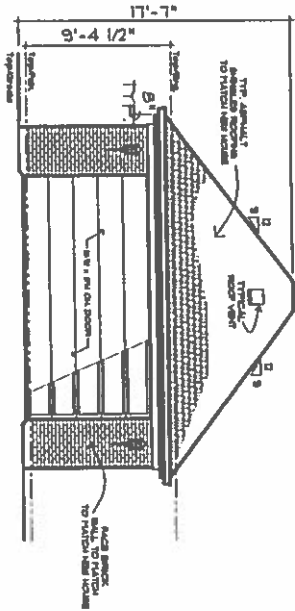
GARAGE FLOOR PLAN
SCALE: 1/8" = 1'-0"



SOUTH ELEVATION
SCALE: 1/8" = 1'-0"



NORTH ELEVATION
SCALE: 1/8" = 1'-0"

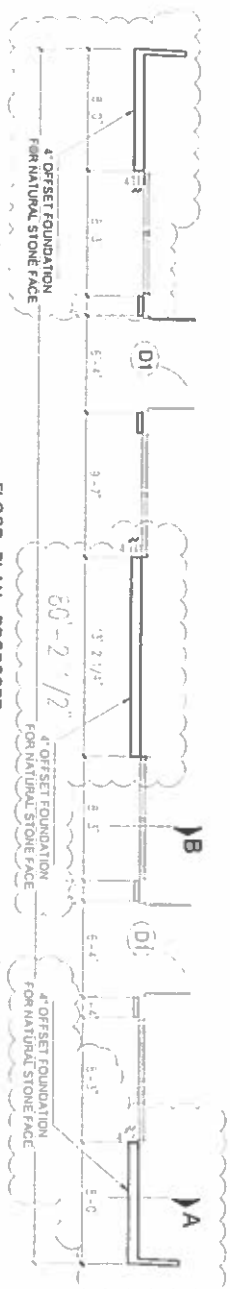


EAST ELEVATION
SCALE: 1/8" = 1'-0"

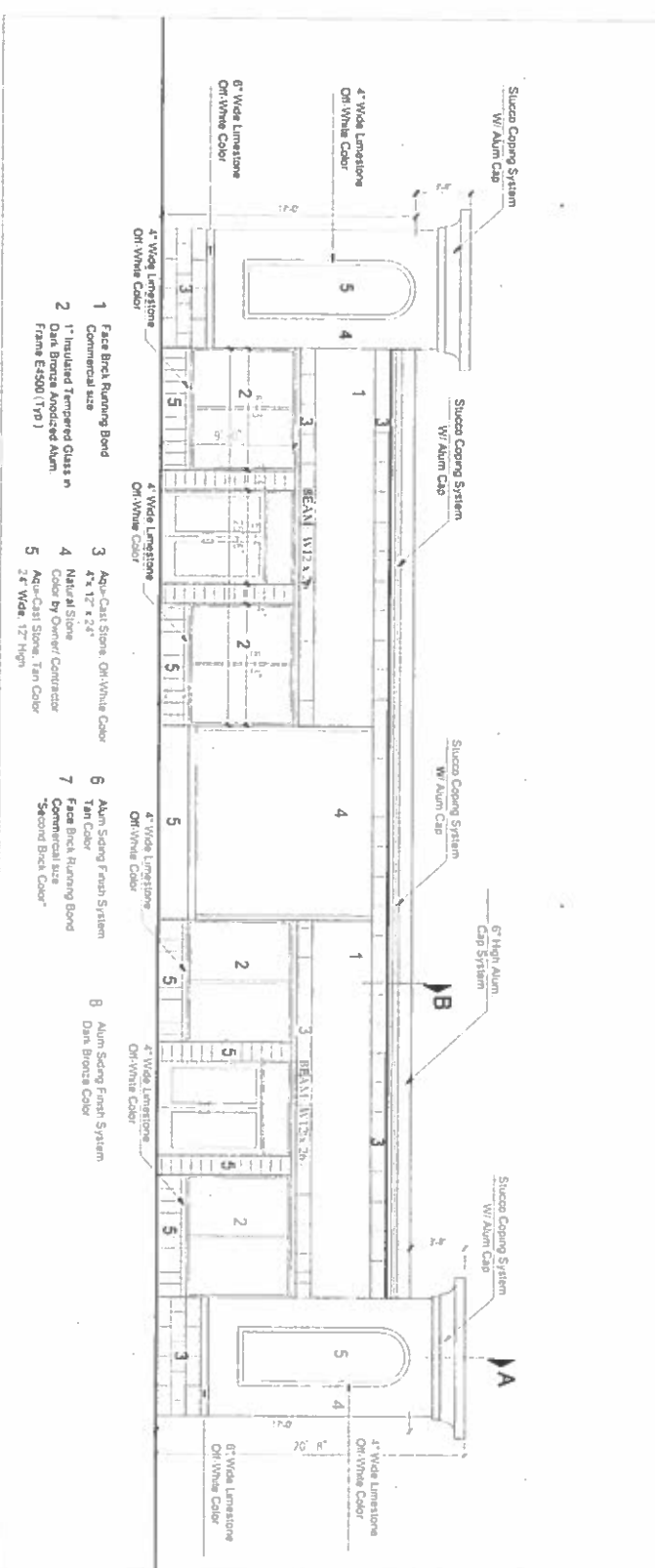
RUBEN L. ANASTACIO & ASSOCIATES, LTD.
4226 N. ARLINGTON HTS. RD.
SUITE # 203
ARLINGTON HTS., L. 60004
TEL (847) 380-7234
FAX (847) 380-1512
ORCHILESA

JOB NO: 2516A

301 S. DELPHIA AVE.



FLOOR PLAN - PROPOSED



- 1 Face Birch Running Bond Commercial size
- 2 1" Insulated Tempered Glass in Dark Bronze Anodized Alum. Frame (E500 Typ)
- 3 Aqu-Cast Stone, Off-White Color 4" x 12" x 24"
- 4 Natural Stone Color by Owner/ Contractor Aqu-Cast Stone, Tan Color 24" Wide, 12" High
- 5 Alum Siding Finish System Tan Color
- 6 Face Birch Running Bond Commercial size
- 7 Second Dark Color
- 8 Alum Siding Finish System Dark Bronze Color

Front Elevation - 10 W. DEVON AVE.

SCALE: 1/8" = 1'-0"