



Agenda Cover Memorandum

Meeting Date: February 11, 2013

Item Title: 2012 Crime Statistics

Action Requested:

Approval

For discussion

Feedback requested

For your information

Staff Contact: Frank Kaminski, Chief of Police

Phone Number: (847) 318-5261

Email Address: fkaminsk@parkridgepolice.org

Background:
Attached you will find the Index Crime Rates for 2012.

There are several significant highlights.

The overall index crime rate for 2012 declined 4% as compared to 2011, making 2012 the lowest crime rate in the past five years. The index crime rate went from 1794.8 in 2008 to 1291.4 in 2012, a 28% reduction in the five year period.

The number of accident reports declined almost 10% (9.77%) in 2012 as compared to 2011, making 2012 the lowest year in accidents in the past five years.

Overall, criminal offenses (Part I and Part II) declined almost 17% in 2012 as compared to 2011.

Burglaries declined by 14% (14.49%).

Calls for service rose 5.57% in 2012 as compared to 2011.

In conclusion, I wish to commend the men and women of the Department, both sworn and civilian, who dedicate themselves to servicing the citizens of our community and embrace new initiatives and strategies to make our community a wonderful place to live. And, I wish to thank all the groups and volunteers that partner with us to achieve our mission.

Recommendation:

Budget Implications:

Does Action Require an Expenditure of Funds: Yes No

If Yes, Total Cost:

If Yes, is this a Budgeted Item: Yes No

If Budgeted, Budget Code (Fund, Dept, Object)

Attachments:

- Index Crime Rates for 2012



PARK RIDGE CRIME OFFENSE/ARREST COMPARISON 2011 VS. 2012

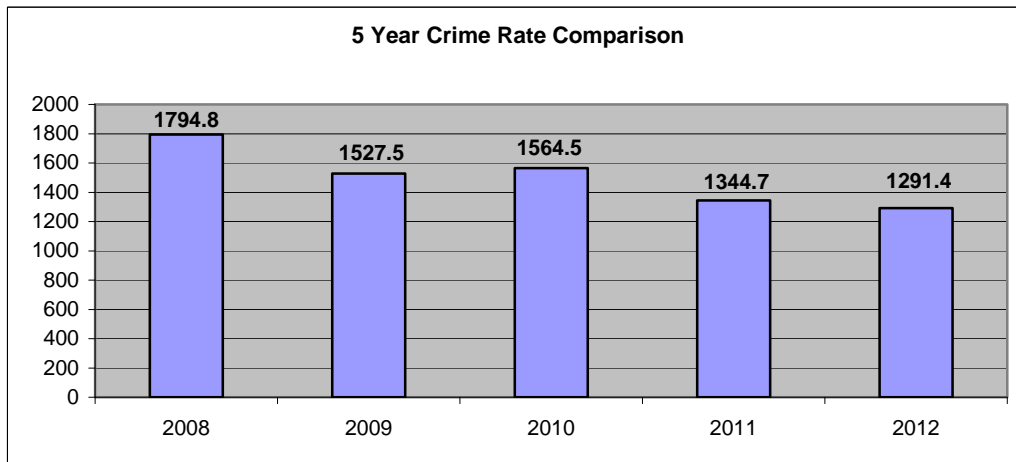
The Park Ridge Crime Offense/Arrest Comparison report is an annual summary and comparison of all Index crimes, or Part I crimes, and a select group of Part II crimes, as well as a variety of other traffic related department activity. For reporting purposes, criminal offenses are divided into two major groups: Part I offenses and Part II offenses. Part 1 crimes are collectively known as Index crimes and are separated into two subgroups, Violent Crimes against Persons and Crimes against Property. Part II offenses are less severe crimes, but account for the majority of criminal offenses reported.

The **crime rate**¹ indicates the prevalence of crime occurring across a given population. It is generally defined as the total number of index crimes per 100,000 inhabitants and is calculated as follows:

$$\frac{\text{Crime Index Count} \times 100,000}{\text{Jurisdictional Population}^2} = \text{Crime Rate}$$

The **percent change** indicates the increase or decrease of the volume of data represented.

$$\frac{\text{Current Figure} - \text{Previous Figure}}{\text{Previous Figure}} \times 100 = \text{Percent Change}$$



The above comparison indicates the lowest Crime Rate in 5 years. The overall Crime Rate in Park Ridge declined almost 4% in 2012.

¹ Based on the latest publication of Crime in Illinois 2009, the Crime Rate for the State of Illinois was 3299.8, and 4285.1 for the County of Cook

² Based on 2010 census data = 37,480



PARK RIDGE CRIME OFFENSE/ARREST COMPARISON 2011 VS. 2012

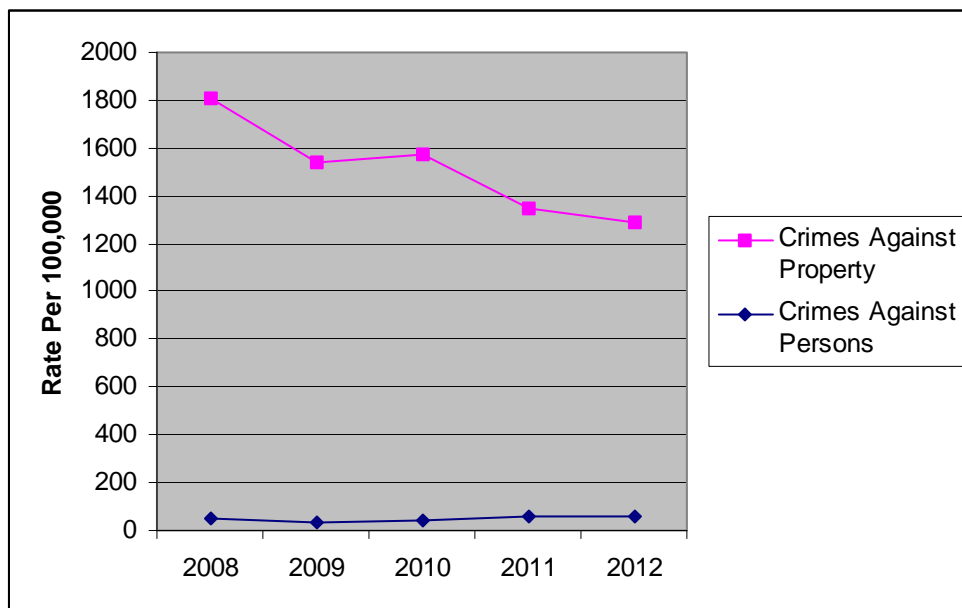
Violent Crime Offenses	2011	2012	# Difference	% Change
Criminal Homicide	0	1	1	n/c
Forcible Rape	2	0	-2	-100.00%
Robbery	7	12	5	71.43%
Aggravated Battery/Assault	14	9	-5	-35.71%
Property Crime Offenses	2011	2012	# Difference	% Change
Burglary	138	118	-20	-14.49%
Theft	334	324	-10	-2.99%
Motor Vehicle Theft	6	13	7	116.67%
Arson	3	7	4	133.33%
Crime Index Offense Totals³	504	484	-20	-3.97%
Violent Crime Offense Totals	23	22	-1	-4.35%
Property Crime Offense Totals	481	462	-19	-3.95%
Violent Crime Arrests	2011	2012	# Difference	% Change
Criminal Homicide	0	1	1	n/c
Forcible Rape	0	0	0	0.00%
Robbery	6	2	-4	-66.67%
Aggravated Assault/Battery	8	2	-6	-75.00%
Property Crime Arrests	2011	2012	# Difference	% Change
Burglary	7	9	2	28.57%
Theft	35	22	-13	-37.14%
Motor Vehicle Theft	1	0	-1	-100.00%
Arson	0	2	2	n/c
Crime Index Arrest Totals	57	38	-19	-33.33%
Violent Crime Arrest Totals	14	5	-9	-64.29%
Property Crime Arrest Totals	43	33	-10	-23.26%

³ All Crime Index categories include attempts, except attempted Homicide, which is classified and reported as an Aggravated Battery. There were no attempted Homicides reported as aggravated battery in 2011 or 2012.



PARK RIDGE CRIME OFFENSE/ARREST COMPARISON 2011 VS. 2012

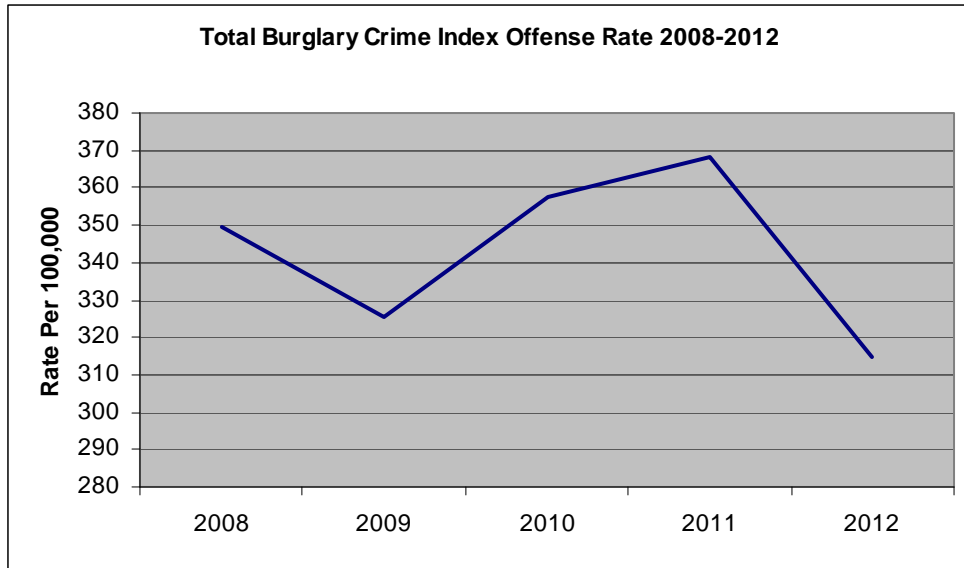
Violent Crime Offenses include Criminal Homicide, Forcible Rape, Robbery and Aggravated Assault/Battery (including attempts). Violent crime offenses, or Crimes against Persons, accounted for 4.5% of the crime index total in 2012. Property Crime Offenses include Burglary, Theft (including Burglary from a Motor Vehicle), Motor Vehicle Theft and Arson. Property Crime Offenses, or Crimes Against Property, accounted for 95.5% of the crime index total in 2012.



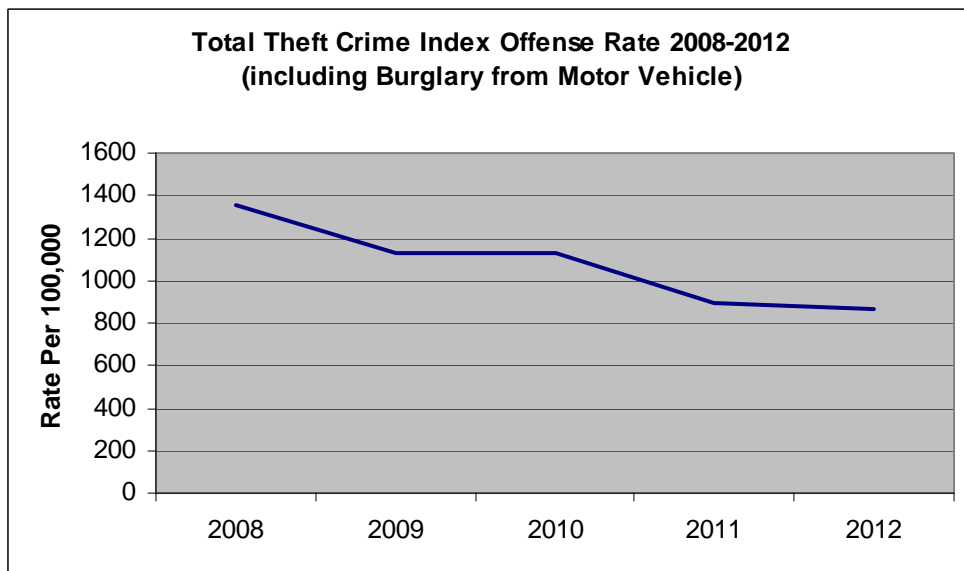
The total number of Violent Crime Offenses declined just over 4% in 2012, while the total number of Property Crime Offenses declined just under 4% in 2012.



PARK RIDGE CRIME OFFENSE/ARREST COMPARISON 2011 VS. 2012



Burglary crime offenses declined almost 15% in 2012.



Theft crime offenses declined almost 3% in 2012.

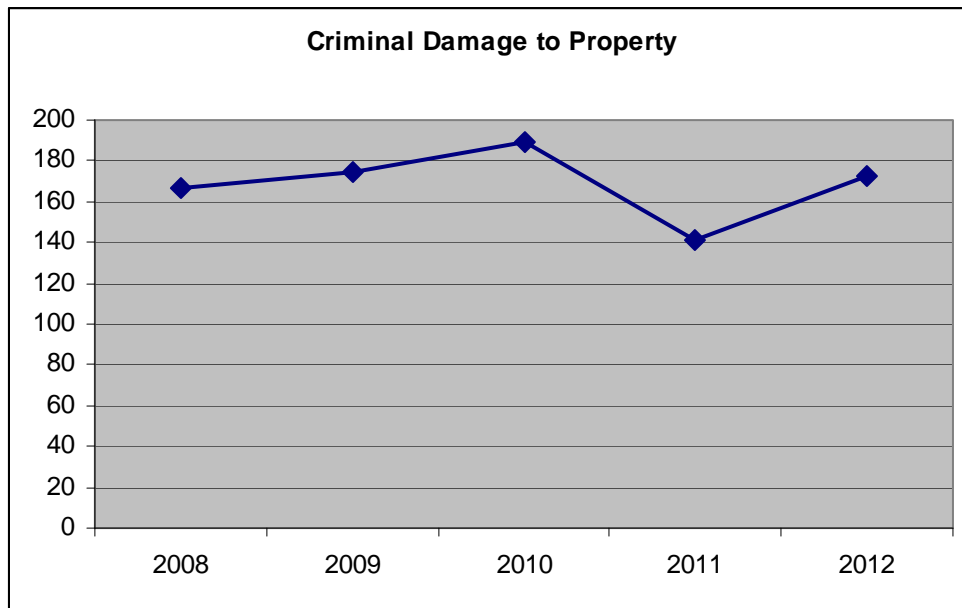


PARK RIDGE CRIME OFFENSE/ARREST COMPARISON 2011 VS. 2012

Drug Crime Arrests	2011	2012	# Difference	% Change
Cannabis Control Act	28	26	-2	-7.14%
Controlled Substances Act	4	5	1	25.00%
Hypodermic Syringes & Needles Act	0	0	0	0.00%
Violations of Drug Paraphernalia Act	21	20	-1	-4.76%
Violations of Methamphetamine Act	0	0	0	0.00%

Drug Crime Arrest Totals	53	51	-2	-3.77%
---------------------------------	-----------	-----------	-----------	---------------

Select Part II Crime Offenses⁴	2011	2012	# Difference	% Change
Simple Assault/Battery	109	72	-37	-33.94%
Domestic Battery	83	93	10	12.05%
Criminal Damage to Property ⁵	141	173	32	22.70%
Criminal Damage to Vehicle	142	104	-38	-26.76%
Juvenile Runaways	272	13	-259	-95.22%



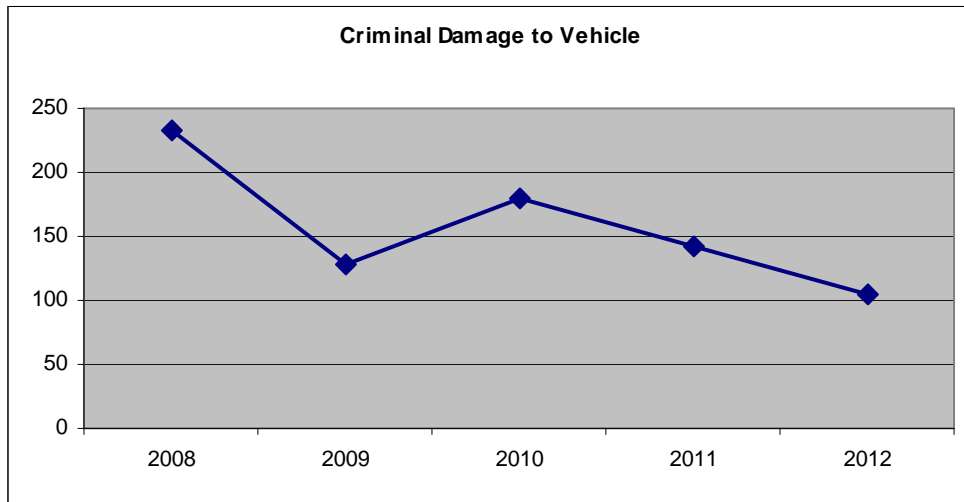
Criminal Damage to Property offenses rose almost 23% in 2012, which is almost entirely due to a spike in Criminal Defacement (graffiti), which increased 50% from 60 in 2011 to 90 in 2012.

⁴ Part II crime offenses include all other criminal offenses that are not included under the Crime Index (Part I) categories. The Part II crime offense categories listed in this report are not all-inclusive and only reflect a select group of offenses.

⁵ Includes Criminal Defacement of Property (graffiti)



PARK RIDGE CRIME OFFENSE/ARREST COMPARISON 2011 VS. 2012



Criminal Damage to Vehicle offenses declined almost 27% in 2012.

Alcohol Related Arrests	2011	2012	# Difference	% Change
Liquor Control Act Violations ⁶	89	91	2	2.25%
DUI Violations	56	54	-2	-3.57%
Zero Tolerance Violations	1	2	1	100.00%
Annual Totals	2011	2012	# Difference	% Change
Part I Crime Offenses	504	484	-20	-3.97%
Part II Crime Offenses	1138	885	-253	-22.23%
Part I Crime Arrests	57	38	-19	-33.33%
Part II Crime Arrests	627	556	-71	-11.32%
Total Criminal Offenses	1642	1369	-273	-16.63%
Total Criminal Arrests	684	602	-82	-11.99%
Drug Crime Arrests	53	51	-2	-3.77%
Service Calls	26305	27769	1464	5.57%
Incidents	27947	29138	1191	4.26%
Traffic Accidents Responded to	1613	1498	-115	-7.13%
Traffic Accident Reports	1362	1229	-133	-9.77%
Total Traffic Stops	3752	3752	0	0.00%

Overall Criminal Offenses declined almost 17% in 2012. Reported Traffic Accidents declined almost 10% in 2012.

⁶ Includes Sale to Minor, Illegal Possession and/or Illegal Consumption by Minor, Misrepresentation of Age by Minor and Illegal Liquor Access



PARK RIDGE CRIME OFFENSE/ARREST COMPARISON 2011 VS. 2012

Traffic Accident Comparison

The following chart reflects totals for traffic accidents responded to, as well as traffic accident reports taken for the last 5 years (not all traffic accidents responded to result in an accident report). The totals indicate that over five years our traffic accidents responded to have declined by 23.6%, and our total accident reports taken have declined by 21.8%.

