

COMMUNITY PROFILE

Name

The village was first called Pennyville, after one of the first settlers, George Penny, but at his request the name was changed to Brickton in 1855. This name was adopted because of the small brick manufacturing village it had become, surrounded by farms. The City was incorporated on July 1, 1873. At the July 4 picnic of 1873, "Brickton," the name of the unincorporated town at that time, was painted on a large balloon and sent aloft, thus symbolizing the changing of the name from Brickton to Park Ridge. The closing of the brickyard prompted the change of name to Park Ridge. The new name was chosen because of the high natural ridge near Ashland Avenue that separates the Des Plaines and the Chicago River watersheds, and the park-like appearance of the town.

Location

Park Ridge is known as a prime residential community located 15 miles northwest of downtown Chicago. Originally settled in 1840, Park Ridge has grown into a medium sized city. The City is situated in a key geographic location in close proximity to O'Hare Airport, the Northwest Tollway, the Kennedy Expressway, CTA Rapid Transit and the Metra Railroad.

Famous Citizens

Hillary Rodham Clinton, Frederick Goudy (inventor of 120 typefaces), Grant Wood, Eugene Kupjack (miniaturist; works displayed at the Art Institute), Alfonso Iannelli (sculptor; designed parts of the Pickwick Theater), Harrison Ford, Jim Pankow, John Pankow (actors), Karen Black & Carrie Snodgrass (actresses), Steve Goodman (folk singer and songwriter).

Famous Landmarks

The Pickwick Theater and the Park Ridge Youth Campus (formerly the Illinois Industrial School for Girls) are listed on the National Register of Historic Places.

Type of Government

Park Ridge was incorporated as the Village of Park Ridge in 1873 and incorporated as the City of Park Ridge in 1910. The City operates under a Mayor-Council form of government. The Mayor and the City Clerk are elected from the population at large. Seven Aldermen are elected for staggered terms from seven wards on the basis of ward population. The Mayor and City Council establish policy; the City Manager oversees the day-to-day operations of the City and its employees.

City's Mission Statement

The City of Park Ridge is committed to providing excellence in City services in order to uphold a high quality of life so our community remains a wonderful place to live and work.

Municipal Services

The City provides emergency 911 telephone, police, fire, and emergency medical services. The Police Department is accredited by the Commission on Accreditation for Law Enforcement Agencies in the United States and Canada. Park Ridge was the 21st department in Illinois and the 255th in the United States and Canada to receive accreditation. The City has one police station and employs 60 police officers and supervisors. The Fire Department is exemplified by the very high "class three" fire insurance rating. This rating indicates the department's ability to successfully suppress fires and provide life support. The Fire Department was awarded International Accredited Agency status through the Commission on Fire Accreditation International in 2001 and 2006. Park Ridge was the seventh fire department in Illinois and the 45th fire department in the United States to receive accreditation. There are two fire stations and 52 officers, firefighters, and firefighters/paramedics.

Park Ridge is one of 37 communities in the United States that has both Fire and Law Enforcement Accredited Agencies. Moreover, Park Ridge is one of 30 communities in the United States with both Fire and Law Enforcement Accredited Agencies and an Insurance Service Office rating (ISO) of Class 3 or better.

In April 2006, the Park Ridge Police Department was awarded second place in a Traffic Safety Challenge by the International Association of Chiefs of Police. The Department also was named as the recipient of the International Association of Chiefs of Police, "Clayton J. Hall Memorial Award," which recognizes the, "best of the best" in highway safety and traffic enforcement in North America.

Park Ridge consists of 7.1 square miles and has 123 miles of streets. The City provides weekly curbside garbage and recycling pickup to its residents. The Public Works Department manages a strong infrastructure program for the maintenance of streets, water mains, sewers, alleys, sidewalks, and trees. The City operates a water distribution system that provides residences and businesses with Lake Michigan water. The City provides environmental health and planning services. The Building Code Effectiveness Grading Classification is 4 (B).

The City fully funds the operation of a public library that has a collection of 240,000 items and a circulation of 736,000.

The City provides partial funding to several community organizations including the Park Ridge Senior Center, Park Ridge Teen Center, Park Ridge Historical Society, Park Ridge Civic Orchestra, Park Ridge Fine Arts Society, Brickton Art Center, Center of Concern, and the Maine Center for Mental Health. The City also subsidizes the cost of providing taxicab service to senior and disabled citizens. The City has no statutory authority over the schools or park districts.

Demographics (Information based on 2000 Census unless otherwise noted)

Population. The City's population is 37,775. 48% of the population is male; 52% is female.

Demographics. 95% of the population is white (non-Hispanic). 3% of the population is Asian.

Age. The median age in Park Ridge is 42 years.

Income and Wealth Statistics. Household income in Park Ridge is substantially higher than surrounding areas and exceeds national averages.

Median Household Income	\$73,154
-------------------------	----------

Average Household Size. The average household size is 2.62 persons.

Education. 92% of the adult population have a high school diploma or higher. 46% have a bachelor's degree or higher.

Employment. Park Ridge has relatively low unemployment, although the unemployment rate has increased from last year. The following is a comparison of Park Ridge unemployment with neighboring communities:

<u>City</u>	<u>February 2009</u>	<u>February 2008</u>
Arlington Heights	6.4%	3.5%
Des Plaines	9.1%	5.4%
Elk Grove Village	7.3%	4.0%
Mt. Prospect	6.6%	3.8%
Niles	7.1%	4.5%
Park Ridge	6.2%	3.6%
Illinois	9.3%	6.0%
United States	8.9%	5.2%

Source: <http://lmi.ides.state.il.us/laus/lausmenu.htm> "Current Monthly Unemployment Rates" "Cities".

There are 1,752 businesses in Park Ridge with 18,563 employees. The City's top industry is outpatient health care.

City Economy. Park Ridge enjoys an active downtown area containing a mix of office space, restaurants, retailers, specialty stores, entertainment and multi-story housing.

Park Ridge is home to many medical and trade associations of which 19 associations own signature buildings. All pay property taxes. Park Ridge is home to the Million Dollar Round Table, the Tooling & Manufacturing Association, the American Egg Board, the Big Ten Athletic Conference, and the American Association of Nurse Anesthetists, among other associations.

To aid in the development of a new automobile sales center, the City created its first Tax Increment Financing District in 1999 and provided the dealer with an economic incentive. To aid in the redevelopment of the Uptown area, the City created its second Tax Increment Financing District in 2003. Uptown redevelopment is near completion.

Land Use and Housing

Residential land use makes up 48% of Park Ridge total area. The remaining general land use includes: commercial - 5%, public, institutional, park, & open space - 24%, and transportation & utilities - 23%. There is little vacant or undeveloped land in Park Ridge; much development results from the demolition of existing structures.

Park Ridge has a long established reputation as a stable residential community known for its well-maintained homes, tree lined streets, and outstanding schools. There are 14,365 housing units in Park Ridge. 85.32% of these units are owner occupied. Sixty-nine percent of the city's residents have lived in the same house since 1995.

Housing Values.

Home prices fell less in Park Ridge than in surrounding areas:

City	Price Decline	City	Price Increase
Park Ridge	7.3%	Chicago-Albany Park/Lincoln Square	.7%
Chicago-O'Hare/Norwood Park	7.4%	Chicago-Avondale/Irving Park	.8%
Chicago-Edison Park/Norwood Park	8.0%	Chicago-Logan Square	1.8%
Glenview	8.2%	Evanston	2.0%
Oak Park	8.3%	Chicago-Lakeview/North Center	4.4%

Source: Crain's Chicago Business, April 28, 2008

Park Ridge has fewer foreclosures than neighboring towns.

City	In pre-foreclosure	Owned by banks	Auctions scheduled
Des Plaines	427	182	119
Palatine	328	205	97
Arlington Heights	221	111	50
Wheeling	196	103	58
Glenview	190	65	42
Mount Prospect	186	52	60
Buffalo Grove	161	52	34
Elk Grove Village	122	31	16
Prospect Heights	115	56	21
Park Ridge	107	31	33
Rolling Meadows	96	49	22
Niles	94	29	31
Rosemont	4	1	1

Source: Park Ridge Journal, November 19, 2008

Building Activity.

	New Single Family Home Construction		Existing Single Family Home Remodeling	
	Permits	(\$Mil)	Permits	(\$Mil)
2005	109	\$52.8	353	\$16.6
2006	93	\$46.1	338	\$15.3
2007	48	\$24.4	348	\$13.0
2008	32	\$16.8	323	\$14.2

Source: Park Ridge Community Preservation and Development records.

There was a significant drop in teardowns in calendar year 2008.

Year	2002	2003	2004	2005	2006	2007	2008
No. of Teardowns	73	72	86	97	110	87	39

Crime Statistics

Unlike neighboring communities, Park Ridge had the highest crime rate decrease from 2006 to 2007.

Crime rate = Total crime index x 100,000 / Population; according to Illinois State Police

Town	Year	Pop.	Rate per 100,000	Total Crime Index	Murder	Criminal Sexual Assault	Robbery	Aggrav. Assault/Battery	Burglary	Theft	Motor Vehicle Theft	Arson
Des	2007	57,033	2,382.8	1,359	0	12	13	70	178	1,012	73	1
Plaines	2006	56,945	2,119.6	1,207	1	8	12	40	199	890	44	13
	% chg	0.2%	12.4%	12.6%	-100%	50.0%	8.3%	75.0%	-10.6%	13.7%	65.9%	-92.3%
Mount	2007	54,140	1,893.2	1,025	1	7	15	35	102	832	30	3
Prospect	2006	54,482	1,703.3	928	0	13	19	24	107	703	56	6
	% chg	-0.6%	11.1%	10.5%	100%	-46.2%	-21.1%	45.8%	-4.7%	18.3%	-46.4%	-50.0%
Niles	2007	29,065	3,247.9	944	1	12	17	13	74	777	50	0
	2006	29,330	2,956.0	867	0	9	18	26	74	698	40	2
	% chg	-0.9%	9.9%	8.9%	100%	33.3%	-5.6%	-50.0%	0.0%	11.3%	25.0%	-100%
Park Ridge	2007	36,887	1,569.7	579	0	4	6	16	109	423	21	0
	2006	36,983	1,733.2	641	1	3	2	12	100	496	24	3
	% chg	-0.3%	-9.4%	-9.7%	-100%	33.3%	200%	33.3%	9.0%	-14.7%	-12.5%	-100%

Source: Park Ridge Journal, November 26, 2008

Governor’s Home Town Award

Park Ridge received several first place Governor’s Home Town Awards. Administered by the Illinois Department of Commerce and Community Affairs in close cooperation with the Lieutenant Governor’s office, this program honors volunteer projects that have improved the quality of life in a community. Awards are:

Recipient	Year
Brickton Art Center	2001
Park Ridge Civic Orchestra	1998
Park Ridge Center of Concern	1997
Economic Development Corporation	1992

In September 2003, the Illinois Arts Alliance Foundation and the Illinois Municipal League selected the City of Park Ridge as one of 16 municipalities to receive an Honorable Mention for the Illinois Arts Friendly Community Awards.

Park Ridge on the Internet

The Park Ridge Community Network, (www.parkridge.info), provides timely information about the City, Library, Park District, schools, businesses (over 1,500) and other organizations on the Internet. The City’s Web site is www.parkridge.us. The Uptown Redevelopment Plan can be found on the city’s web site. The Park Ridge Fire Department has a Web site at www.parkridgefd.org and the Park Ridge Police Department’s Web address is www.parkridgepolice.org. Internet e-mail to the City may be sent to info@parkridge.us. The Library’s Web address is www.parkridgelibrary.org. Internet e-mail to the Library may be sent to krolsing@prpl.org.

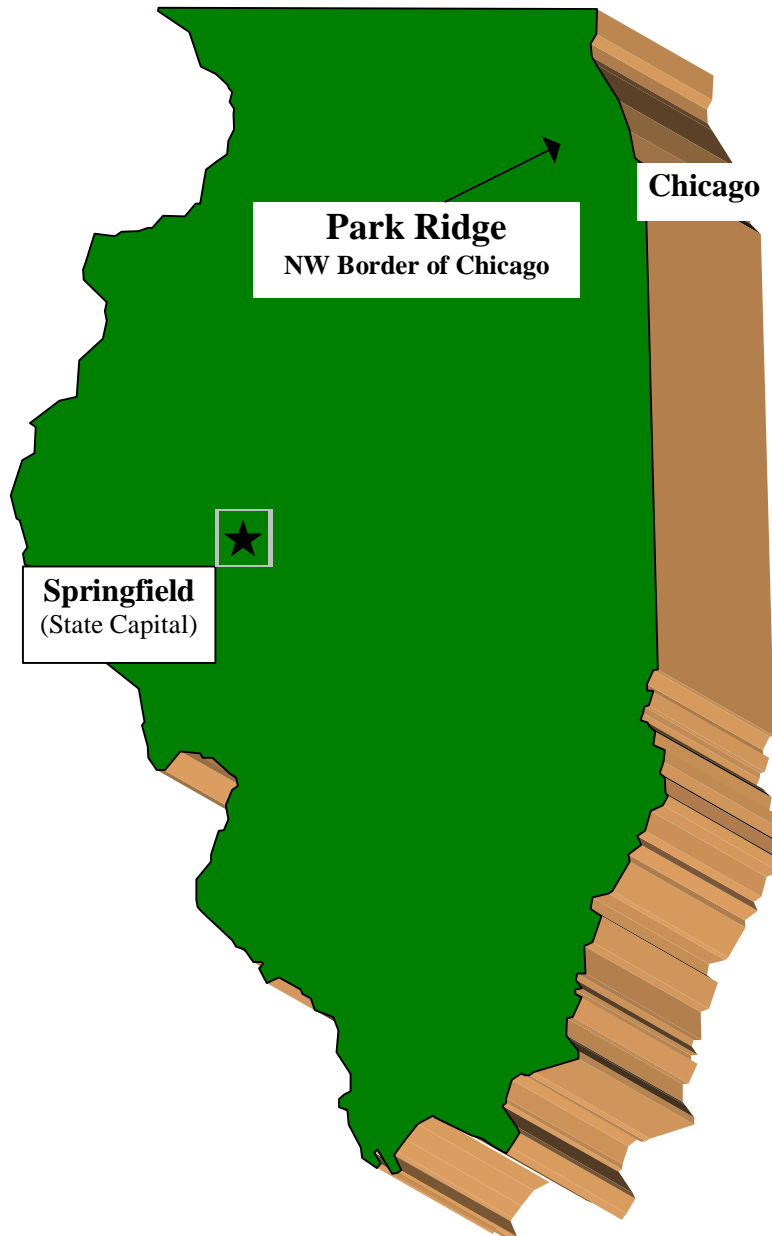
Uptown Redevelopment

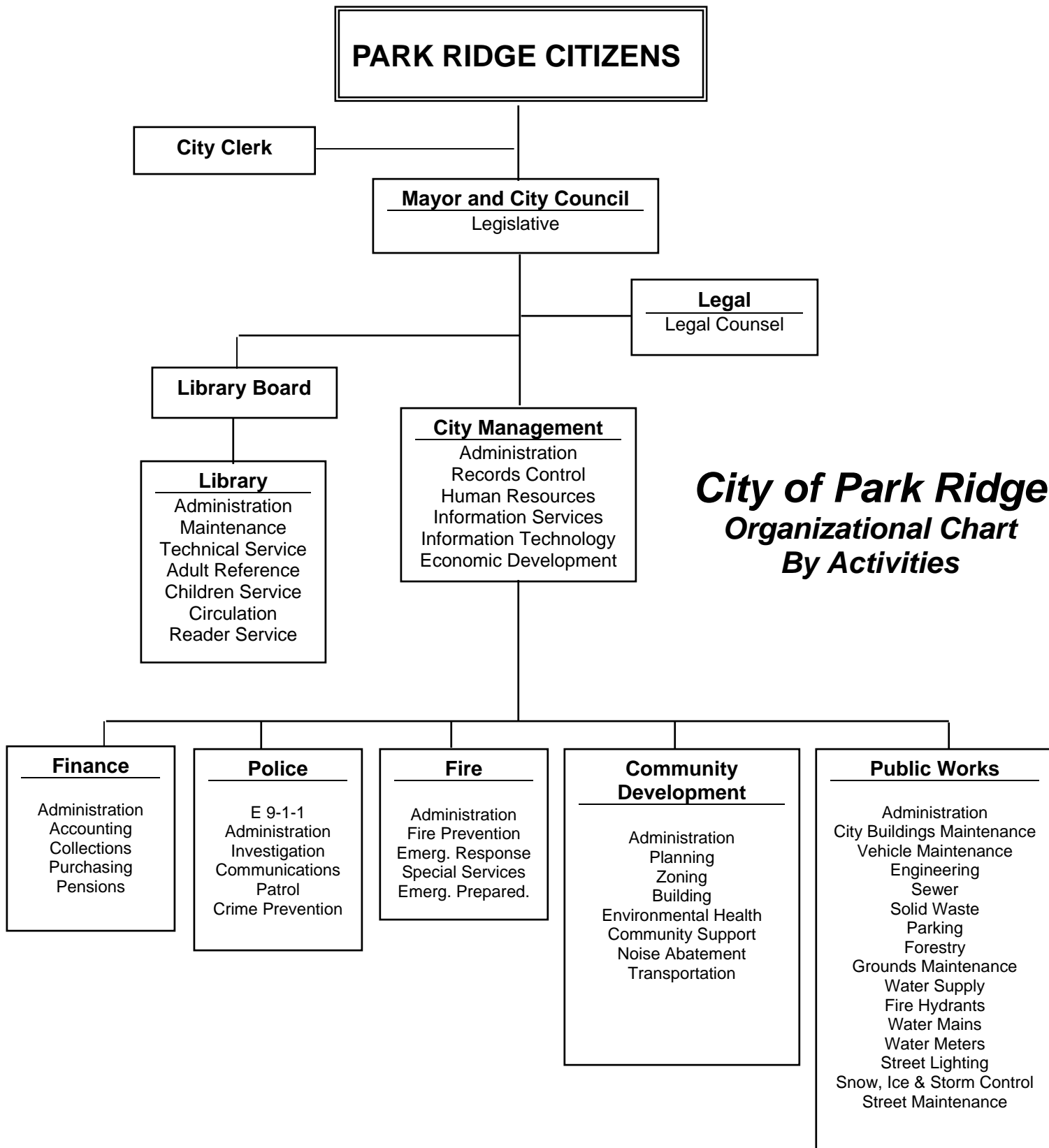
The Phase II parking garage constructed as part of Uptown Park Ridge re-development opened to the public on August 11, 2008. There are 286 free public parking spaces on the main level and 183 residential parking spaces on the lowest level of the garage. A surface parking lot opened on August 27, 2008.

Several businesses are open in Uptown. They include: Amphora’s Home Furnishings, Trader Joe’s, Chico’s, Joseph A. Banks, Kriser’s Pet Store, Lens Crafters Optique, Scottrade, Aveda Salon & Spa, Jason’s Deli, Houlihan’s, and Noodles & Company.

The Uptown Park Ridge redevelopment project earned two awards. The 2008 Gold Award was presented by the Illinois Chapter of the American Planning Association “in recognition of high quality, transit-oriented project that reinforces Uptown as an exciting and diverse mixed use area with a strong retail and entertainment focus.” The Congress for New Urbanism, Illinois Chapter, recognized the Target Area 2 Development Team for promoting the importance of new urbanism in regional planning.

**CITY OF PARK RIDGE,
ILLINOIS**





BOARDS AND COMMISSIONS

Appearance Commission

Board of Fire & Police Commission

Board of Trustees – Fire Pension Fund

Board of Trustees – Police Pension Fund

Civil Service Commission

Community Health Commission

Electrical Commission

Emergency Telephone Service Board

Fair Housing Commission

Healthy Community Partnership (in conjunction with Lutheran General Hospital)

Heritage Commission

Human Needs Task Force

Library Board

Liquor License Review Board

Planning & Zoning Commission

Public Arts Commission

Sister Cities Commission

Youth Commission

Zoning Board of Appeals

OFFICERS AND OFFICIALS

MAY 4, 2009

Mayor

David Schmidt

Aldermen

First Ward:

Second Ward: Richard A. Di Pietro

Third Ward: Donald Bach

Fourth Ward: James L. Allegretti

Fifth Ward: Robert J. Ryan

Sixth Ward: Thomas F. Carey

Seventh Ward: Frank Wsol

City Clerk

Betty W. Henneman

City Manager

James Hock

Deputy City Manager

Juliana Maller

Police Chief

Director of Community Development

Carrie Davis

Library Director

Janet Van De Carr

Public Information Coordinator

Aggie Stempniak

Human Resources Administrator

Diane Schroeder

Director of Finance

Diane Lembesis

Fire Chief

Craig Gjelsten

Director of Public Works

Wayne Zingsheim

Director of Information Technology

Diane Nelson

Assistant Finance Director

Linda Lazzara

City Attorney

Everette Hill, *Klein Thorpe & Jenkins, Ltd.*